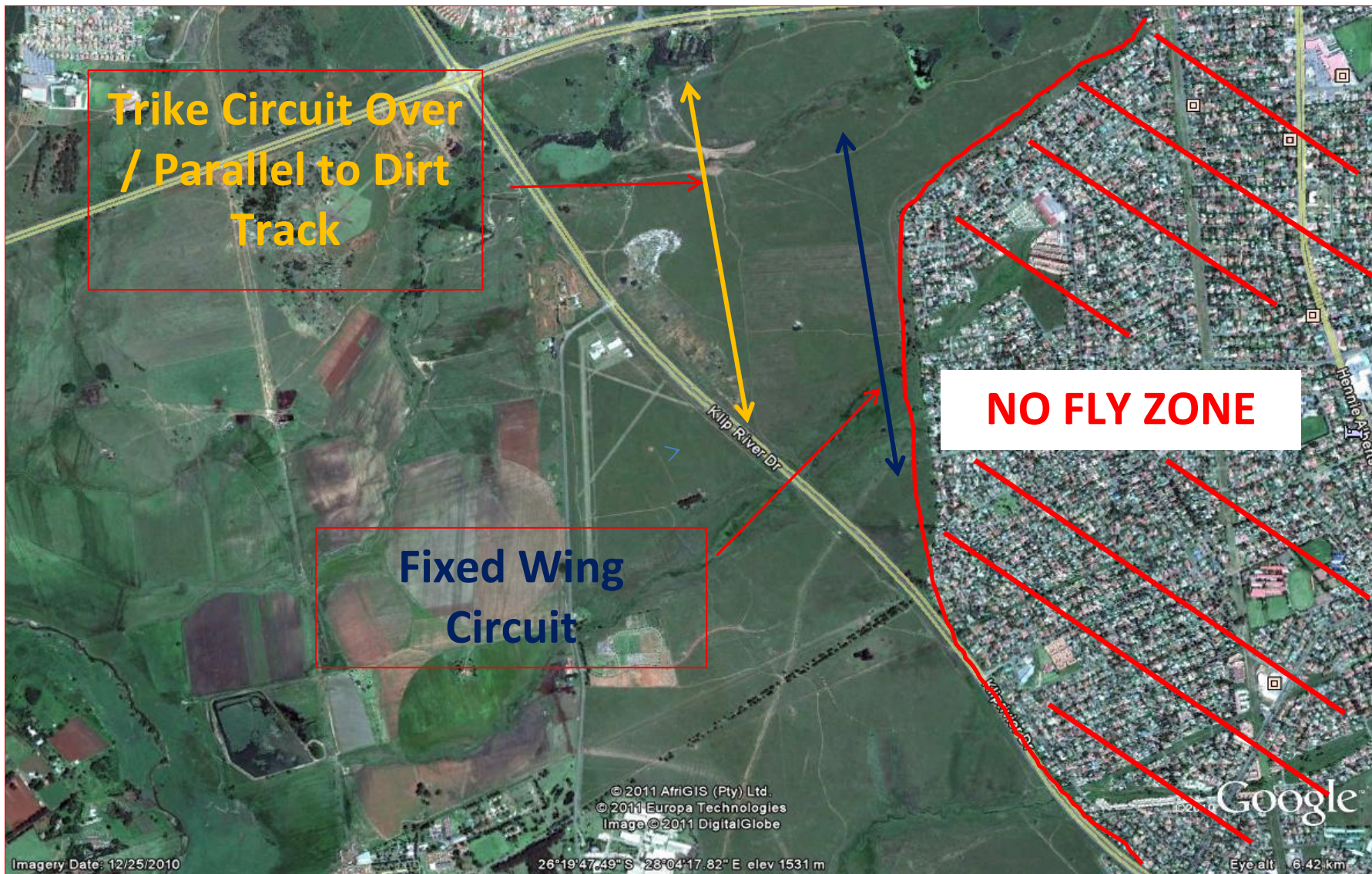


No Fly Zone @ Panorama



GUIDELINES OF THE AIRFIELD

- Circuits to the east of Panorama as follows (When Circuits are Flown to the east)
 - Trikes to have a shorter circuit than Fixed wings (Over Dirt track in Field east of the Panorama)
 - Fixed Wing to fly larger circuit than trikes BUT do NOT overfly BUILT UP area (Brakendowns)
- The area shaded in RED to be avoided
- TRIKES MUST BE AT CIRCUIT HEIGHT ON DOWN WIND **5550 FT**
- FIXED WINGS MUST BE AT CIRCUIT HIGHT ON DOWN WIND **5850 FT**